

BATTLE OF TUDELA - 23 NOV 1808

BACKGROUND

In early November having retreated from Madrid back towards the Pyrennes Napoleon's French Army, with Joseph notionally commanding, returned to the offensive, pushing SW from around Miranda de Ebro. The Spanish responded with a three pronged advance; Blakes Army of Galicia moving E out of the Plains of Leon around Valladolid against Napoleon's R flank, Palafox moving NNW from Zaragoza against his L flank, and General Castanos' Army of the Centre moving from Madrid against Napoleon's centre. However there were not enough Spanish troops to form such a broad front and there was a large gap between Blake and Castanos. Sir John Moore's British and Portugeuse Army (the former having arrived on 9 Oct) had been tasked with supporting the Spaniards. Moving forward 11-26 October, with poor logistics and with horse, guns and reinforcements far behind Moore was unsure as to what to do. Whilst he hesitated he received news of Blake's defeat by Joseph at Espinosa. This made up his mind and he decided to pull back to La Coruna to save his army. However he knew that the lack of his force would leave a gaping hole in the Spanish front, one which Joseph could use to not only seize Madrid, but also to chase after him. So Moore dispatched Paget's Reserve Division to join up with Castanos along the Ebro. So



ADVANCE TO CONTACT

Lannes was put in charge of the force moving SE from Miranda de Ebro through Logroño along the W bank of the Ebro. On 21st Nov Castanos halted his advance and withdrew SSE from Calahorra taking up a line between Cascante and Tudela. Recognising that he was facing a strong French force he

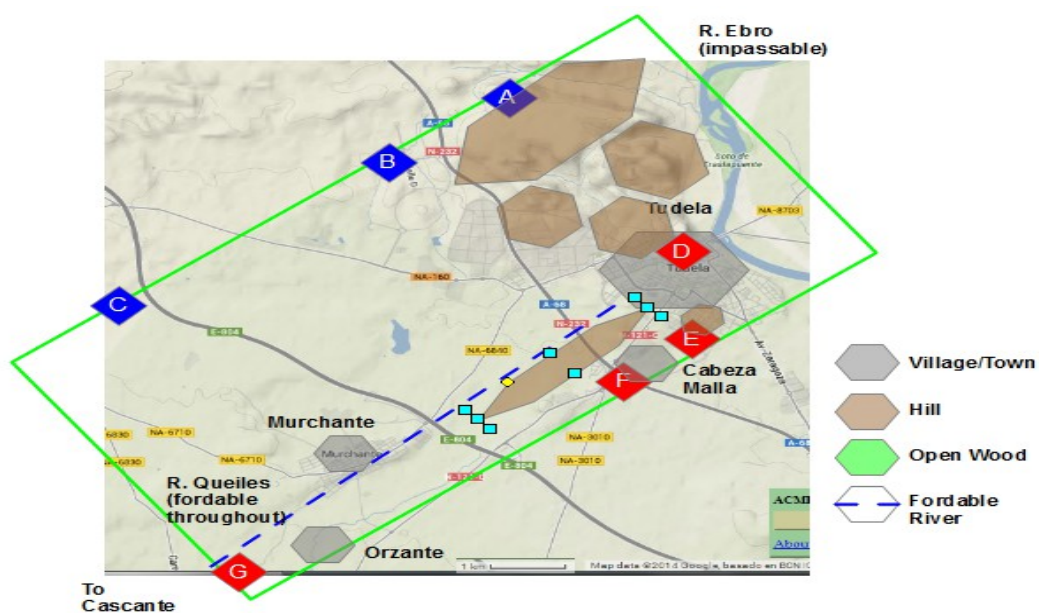
asked Palafox on his R for re-inforcements, and O'Neill's division was sent W towards Tudela, where it arrived ready to cross the bridge over the Ebro just as the French arrived at Tudela on the 23rd. At Tudela Castanos deployed Roca's and Paget's Divisions in Tudela, whilst keeping the bulk of his own forces at Cascante. Roca failed to deploy a strong set of pickets and on the morning of the 23rd the French almost caught the Spanish napping.

OBJECTIVES

The French objective is to take the W end of the bridge over the Ebro, with a secondary objective of eliminating all enemy forces W of the Ebro. This protects and opens the way to Madrid.

The Spanish objective is to stop the French achieving their objective by nightfall (20 turns).

TERRAIN



Note that the board will either be 30 x 15 hex (@ 1 hex = 100m), or 30 hex x 30 hex (in which case it will extend more to the NW and SE).

ORBAT

- FRENCH

| Card | Formation | Units | Pts | Comment |
|------|--------------------------------------|---|-----|-------------------------------|
| KC | Marshal Lannes | Command Factor 4 | 20 | |
| 1C | 1 st Division - Mathieu | 5 x Bn, Ft Bty (8 x 8 pdr), all Regular | 50 | |
| 2C | 2 nd Division - Musnier | 4 x Bn all Inferior, Ft Bty (8 x 8 pdr) Regular | 36 | |
| 3C | 3 rd Division - Morlot | 3 x Bn all Inferior, Ft Bty (8 x 8 pdr) Regular | 32 | |
| 4C | 4 th Division - Grandjean | 4 x Bn, Ft Bty (8 x 8 pdr), all Regular | 44 | |
| 5C | Advance Guard | 1 x Chasseurs Inferior | 8 | May rejoin Cav Bde at no cost |
| 6C | Cav Bde - Wathier | 1 x Cuirassiers, 1 x Hussars, both Inferior | 20 | |
| | | Core Total | 210 | |
| 7C | N2 nd Division - Lagrange | 4 x Bn, Ft Bty (8 x 8 pdr), all Regular | 44 | |
| 8C | Cav Bde - Colbert | 1 x Chasseurs, 1 x Hussars, both Regular | 20 | |
| 9C | Cav Bde - Digeon | 2 x Dragoons, both Regular | 22 | |
| | | TOTAL | 296 | |

- ALLIES

| Card | Formation | Units | Pts | Comment |
|----------------------|-------------------------------------|--|-----|--|
| KD | General Castanos | Command Factor 3 | 0 | Maybe even 2 (-20) |
| 1D 2D | 5 th Division - Roca | 4 x Line Bn (Inferior), 1 x Lt Bn (Regular), 1 x Ft Bty (ea 6 x 6 pdr)(Inferior) 4 x Line Bn (Inferior), 1 x Lt Bn (Regular), 1 x Ft Bty (ea 6 x 6 pdr)(Inferior) | 54 | 7 inf 3 cac |
| 3D 4D | Paget's Division | 4 x Line Bn, 1 x Rifle Bn, 1 x LD (all Regular), 1 x Bty RHA (8 x 6 pdr) (Elite) | 63 | |
| 5D 6D 7D 8D | 1 st Division - O'Neille | 4 x Line Bn (Inferior), 1 x Lt Bn (Regular) 4 x Line Bn (Inferior), 1 x Ft Bty (8x6pdr) 4 x Line Bn (Inferior) 1 x Dragoons (Inferior), 1 x Horse Bty (6x6pdr) (Inferior) | 97 | 16+ 1 lt |
| | | Core Total | 214 | |
| 1H/ 2H | 4 th Division – la Pena | 4 x Line Bn (Inferior), 1 x Lt Bn (Regular), 1 x Ft Bty (ea 6 x 6 pdr)(Inferior) | 40 | 1H for advance guard, 2H for remainder |
| 3H | | 4 x Line Bn (Inferior), 1 x Ft Bty (ea 6 x 6 pdr) (Inferior) | | |
| 4H | Cav Division (-) | 3 x Chasseurs (Inferior), 1 x Chasseurs (Regular) | 34 | |
| | | TOTAL | 288 | |

DEPLOYMENT

- French

| Card | Formation | Entry Point | Entry Turn |
|------|--------------------------------------|-------------|---|
| 1C | 1 st Division - Mathieu | A | Turn 3=5+, Turn 4=4+, Turn 5=3+, Turn 6=2+, else Turn 7 |
| 2C | 2 nd Division - Musnier | B | Turn 4=5+, Turn 5=4+, Turn 6=3+, Turn 7=2+, else Turn 8 |
| 3C | 3 rd Division - Morlot | A | Turn 1 |
| 4C | 4 th Division - Grandjean | B | Turn 5=5+, Turn 6=4+, Turn 7=3+, Turn 8=2+, else Turn 9 |
| 5C | Advance Guard | A | Turn 1 |
| 6C | Cav Bde - Wathier | B | Turn 4=5+, Turn 5=4+, Turn 6=3+, Turn 7=2+, else Turn 8 |
| | | | |
| 7C | N2 nd Division - Lagrange | C | Turn 8 onwards, 6+ |
| 8C | Cav Bde - Colbert | C | Turn 8 onwards, 6+ |
| 9C | Cav Bde - Digeon | C | Turn 8 onwards, 6+ |

- Allies

| Card | Formation | Entry Point | Entry Turn |
|-------|---|-------------|--|
| 1D,2D | 5 th Division - Roca | D | In Tudela. Can deploy outside on Turn2=4+, else Turn 3 |
| 3D,4D | Paget's Division | E | In Cabeza Mella. Can deploy outside on Turn3=4+, else Turn 3 |
| 5-8D | 1 st Division - O'Neille | F | Turn 4=5+, Turn 5=3+, else Turn 6 |
| | | | |
| 1H | 1/4 th Div – la Pena (Initial) | G | Turn 6 onwards, 4+, DA battalions |
| 2H | 1/4 th Div – la Pena (Remainder) | G | Turn 8 onwards, 5+, DM+1 if Fr In reinforcements arrived |
| 3H | 2/4 th Division – la Pena | G | Turn 8 onwards, 6+, DM+1 if Fr In reinforcements arrived |
| 4H | Cav Division (-) | G | Turn 8 onwards, 6+, DM+1 if Fr In reinforcements arrived |

VICTORY CONDITIONS

French gain Victory Points (VP) as follows:

- 1 VP for each allied unit forced off the board (eg by a retreat or rout)
- 5 VP for each allied unit that surrenders (enemy on at least 3 hex sides, 2 non-adjacent) and with a retreat or retire result
- 5 VP for each allied unit that ends with a state of Spent

Spanish gain Victory Points (VP) as follows:

- 1 VP for unit not Spent and still on the board at nightfall
- 5 VP for each French unit forced off the board (eg by a retreat or rout) or Spent at the end of the game
- 2VP for each hex held along the high ground along the Tudela-Orzante road, and uncontested (ie no neighbouring French unit)

There is a winner if there is a margin of at least 25 points.

SPECIAL NOTES